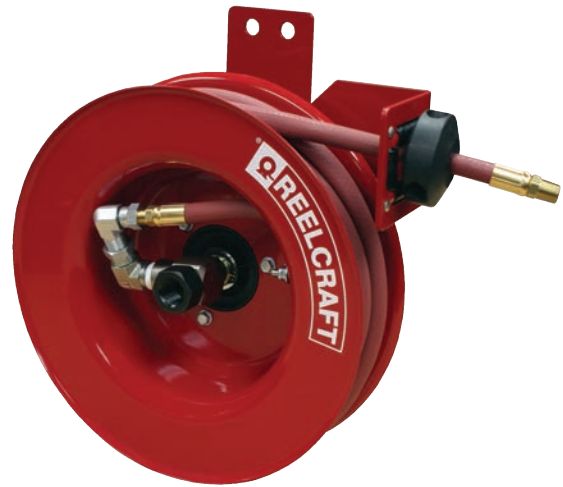


Operating Instructions

Series 4000 Spring Driven Hose Reels

Side Mount Model Numbers:

4400 OLPSMR 4435 OLPSMR 4625 OLPSMR
4400 OLPSML 4435 OLPSML 4625 OLPSML
4425 OLPSMR 4600 OLPSMR
4425 OLPSML 4600 OLPSML



Dimensions

A	B	C	D	E
5 2/3"	12 1/4"	14"	12"	1 1/4"

SAFETY

1. Do not use reel at higher pressures or temperatures than listed on the back of this bulletin.
2. Remove all spring tension before beginning disassembly process.

INSTALLATION:

A flexible hose connection must be used between the hose reel inlet and the source of supply to prevent possible misalignment and binding.

MOUNTING:

The hose reel is equipped with a universal mounting bracket so that it can be mounted on the floor, wall or ceiling; whichever place is convenient. The hose guide arm can be moved to the position desired by removing the screws fastening the guide bracket to the reel base. Shift the guide arm bracket so the hose comes off the reel at the desired position and replace the screws.

LUBRICATION:

Hose reel spring and bearings are factory lubricated and require no further lubrication.

REPLACING HOSE:

1. Wind spool flange clockwise-facing swivel-until spring is tight.
2. Back off three turns and latch.
3. Insert hose through roller guide.
4. Connect hose fitting to swivel joint and secure hose with clamps.

ADJUSTMENTS:

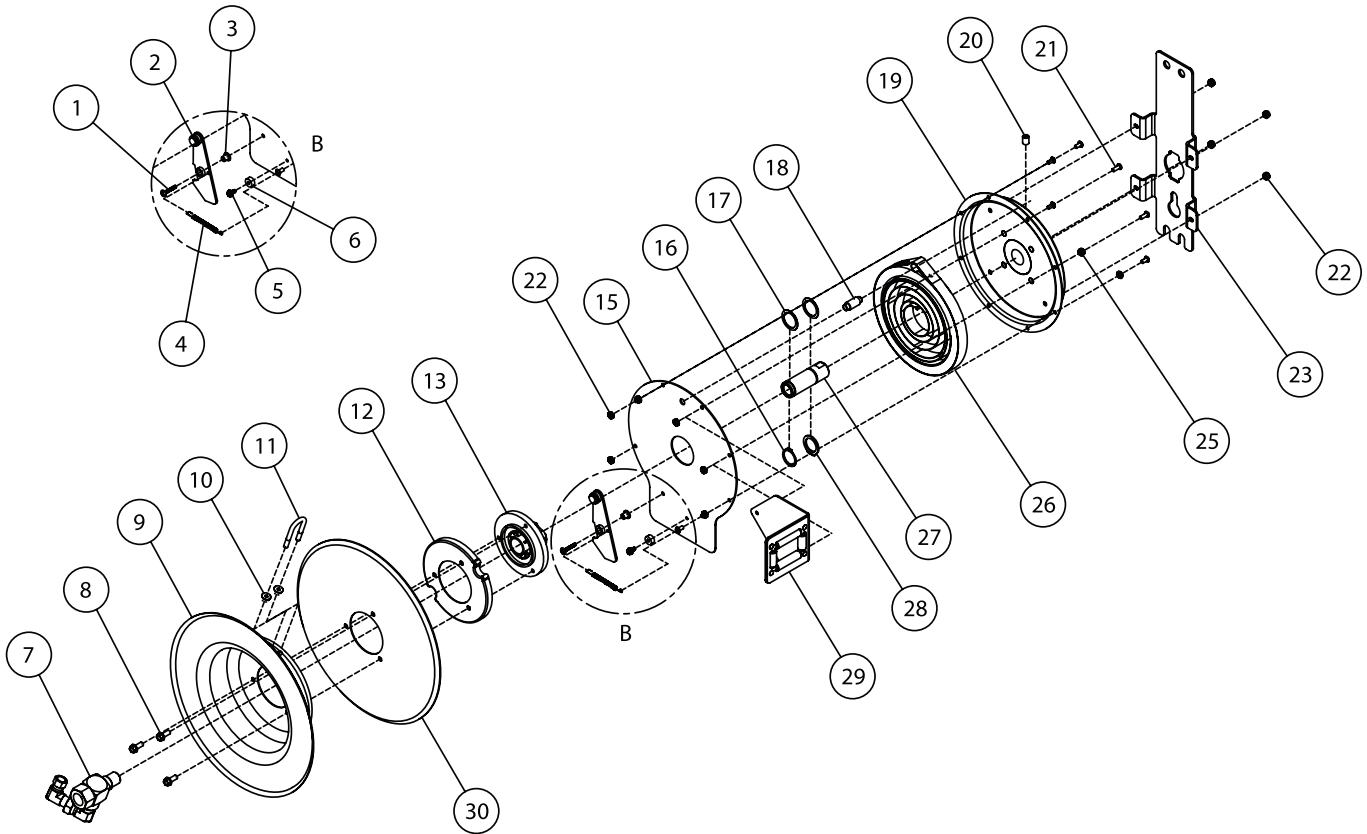
To adjust spring tension, add or remove wraps of hose from the spool, one wrap at a time until desired tension is obtained.

REPAIRS:

Extensive repairs should be performed only by an authorized serviceman or factory to avoid damage which may void your warranty. Remove all spring tension before beginning disassembly process.

Form# 1230-1011 Rev: 1/2016

Series 4000 Spring Driven Hose Reels



Item #	Part #	# Req.	Description	Item #	Part #	# Req.	Description	Item #	Part #	# Req.	Description
1	S300011	1	Machine Screw	10	261650-1	2	Lock Nut	20	300006	1	Set Screw
2	S400109	1	Latch Plate Assembly	11	3-117440	1	U-Bolt	21	300002	7	Machine Screw
3	S400012	1	Latch Bushing	12	S400019	1	Latch Cam	22	S82-15	11	Lock Nut
4	S400018	1	Latch Plate Screw	13	S260648	1	Spring Arbor	23	262503	1	Side Mount Plate
5	S32-136	1	Self Tapping Screw	15	262493	1	Spring Case Cover	25	S82-15	1	Lock Nut
6	S400021	1	Latch Plate Bumper	16	300031	1	Snap Ring	27	S400015	1	Main Shaft
7	602330	1	Swivel Assembly	17	300034	2	Wear Washer	28	S137-12	1	Snap Ring
8	S295-102	3	Self Tapping Screw	18	S261360	1	Spring Case Stud	29	S400107	1	Guide Arm
9	400005	1	Sheave Flange	19	602434	1	Spring Case Assembly	30	262493	1	Sheave Disc

Item #	Description	# Req.	4400 OLPSMR	4400 OLPSML	4425 OLPSMR	4425 OLPSML	4435 OLPSMR	4435 OLPSML
26	Drive Spring Assembly	1	S400030	S400030	S400030	S400030	S400030	S400030
	Hose Assembly	1	None	None	601001-25	601001-25	601001-35	601001-35
	Bumper Stop Assembly	1	None	None	1-HR1004-A	1-HR1004-A	1-HR1004-A	1-HR1004-A
	Max. Operating Pressure		500 PSI	500 PSI	300 PSI	300 PSI	300 PSI	300 PSI
	Max. Operating Temperature		210 °F	210 °F	150 °F	150 °F	150 °F	150 °F

Item #	Description	# Req.	4600 OLPSMR	4600 OLPSML	4625 OLPSMR	4625 OLPSML
26	Drive Spring Assembly	1	S404230	S404230	S404230	S404230
	Hose Assembly	1	None	None	601013-25	601013-25
	Bumper Stop Assembly	1	None	None	1-HR1004	1-HR1004
	Max. Operating Pressure		500 PSI	500 PSI	300 PSI	300 PSI
	Max. Operating Temperature		210 °F	210 °F	150 °F	150 °F